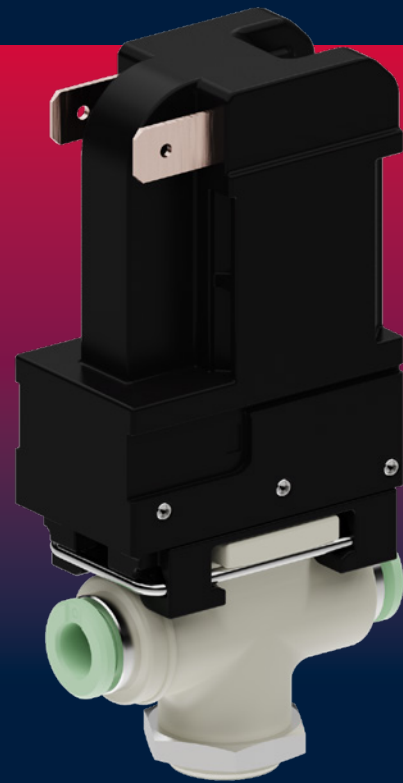


More hygiene in a compact design

Medium-separated solenoid valve type ELV

Hygienic, compact, low maintenance.

The special feature of this medium-separated lever solenoid valve is the control of high flow rates in a compact design. This is made possible by a high power density.



ADVANTAGES



Hygienic Design

- Dead space optimized
- Patented hyperfit® sealing concept
- Quick rinsing times
- Less cleaning cycles



Longer operating times

- Wear free construction
- Use of high quality materials



Compact design

- High power density
- Integrated AVS Römer push-in connectors in sizes 4 and 6mm



Assembly and maintenance – simple, fast and safe

- Tool-free assembly due to AVS Römer push-in technology
- Quick replacement of the membrane



Medium separated

- Thermal decoupling
- Corrosion resistant



Tailored to your requirements

- Standard: pressure up to 16bar and nominal size up to 4mm
- Customized solutions on request



Medium-separated solenoid valve MAGMA type ELV

Spade terminal 6,3 x 0,8

Solenoid activator

Fixing clip

Valve body

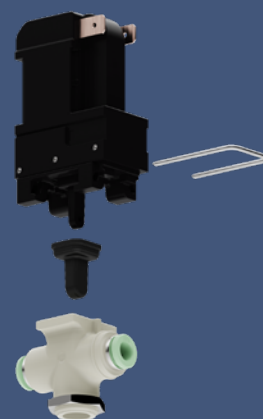
AVS Römer push-in connector
with patented hyperfit® technology

Lock nut

ASSEMBLY AND MAINTENANCE

Installation of the medium-separated solenoid valve type ELV is simple, fast and tool-free due to the proven AVS Römer push-in connectors.

In addition to its compact design, the valve is characterized by long maintenance intervals and short service times.



AVS Römer GmbH & Co. KG

Reismühle 3 • 94481 Grafenau • Phone: +49 8552 4076 300
info@avs-roemer.de • www.avs-roemer.de

V2023.08

