

**NEW INNOVATION!**

# MULTIFUNCTION VALVE

THE SMART COMBINATION FOR PRESSURE REGULATION



**All-in-one anti-vacuum membrane valve and over-pressure valve for your hot and cold applications**

**Special Features:**

- Extra connections for e.g. pressure, temperature or flow rate monitoring
- ELSA Push-in cartridges by AVS-Römer for a quick and tool-free assembly
- Easy internal cleaning through quick release system
- Compact built

**Application Fields:**

- Food and Beverage Industry  
e.g. Full automatic coffee machines
- Medical and Pharma Devices  
e.g. Autoclave



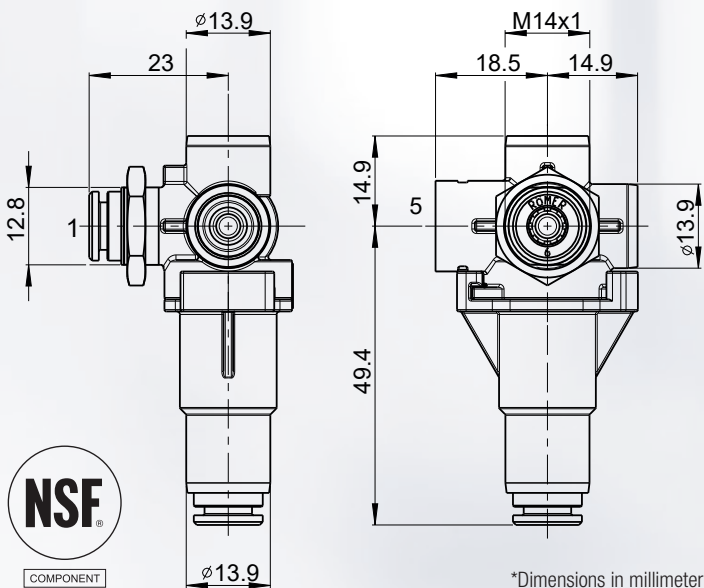
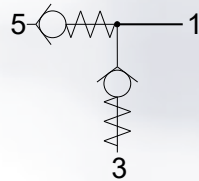
**Characteristics:**

- Suitable for fluids and gases
- Valve body made of high-quality plastics
- Minimal heat loss
- Light weight
- Operating temperature up to 284 F (140 °C)
- Operating pressure up to 87 psi (6 bar)
- Nominal diameter: 4 mm
- Connection sizes: Outside diameter 4, 6 mm
- FDA compliant materials
- NSF 169 certified

**Function:**

By an under pressure in the system the anti-vacuum membrane opens and allows air into the system.

By an over pressure in the system the over pressure valve will open and release the ascensive pressure. The opening pressure can be adjusted to your requirements in a certain way.


**Connecting - Controlling - Measuring**  
of Fluids & Gases

In addition to our broad product portfolio we also strive to develop customized solutions for your application.

Contact us to learn more about AVS-Römer!

