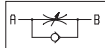


Schwenk-Drosselrückschlagventil, Abluft drosselnd, Rändelschraube konterbar

 Produkt-
gruppe **24**

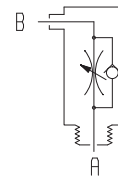
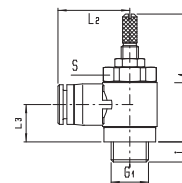
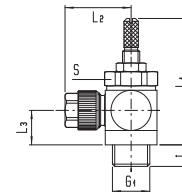
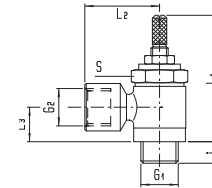
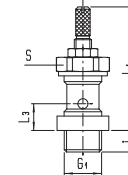
 PN
10

 Anwendung:
Druckluft

 Betriebsdruck:
0,2 bis 10 bar

 $T_{\min} - 10\text{ °C}$
 $T_{\max} + 80\text{ °C}$
**Messing
vernickelt**

 Werkstoff: Ventilkörper: Ms 58 (vernickelt)
 Dichtung: NBR (Nitrilkautschuk)

DN	Qn-Wert Luft [l/min]	G1	Anschluss am Ringstück G2 bzw. D/d		i	L1 max.	L2	L3	S	Typ	Bestell- nummer	Preis
2,5	0-280	G 1/8	ohne Ringstück		6	43	-	9	14	RCU-219M-1/8N	637102	8,93 €
4,5	0-400	G 1/4	ohne Ringstück		7,5	46	-	9,5	17	RCU-219M-1/4N	637103	10,41 €
2,5	0-280	G 1/8	G 1/8	-	6	43	15	11	14	RCU-219M-1/8N-1/8	637112	10,46 €
4,5	0-400	G 1/4	G 1/4	-	7,5	46	26	12	17	RCU-219M-1/4N-1/4	637113	12,31 €
2,5	0-280	G 1/8	-	4, 3/3	6	43	18	11	14	RCU-219M-1/8N-43/3	637162	10,41 €
2,5	0-280	G 1/8	-	5/3	6	43	18	11	14	RCU-219M-1/8N-5/3	637163	10,41 €
2,5	0-280	G 1/8	-	6/4	6	43	21	11	14	RCU-219M-1/8N-6/4	637164	10,41 €
2,5	0-280	G 1/8	-	8/6	6	43	21	11	14	RCU-219M-1/8N-8/6	637165	10,49 €
4,5	0-400	G 1/4	-	6/4	7,5	46	23	12	17	RCU-219M-1/4N-6/4	637171	11,96 €
4,5	0-400	G 1/4	-	8/6	7,5	46	23	12	17	RCU-219M-1/4N-8/6	637172	12,03 €
4,5	0-400	G 1/4	-	10/8	7,5	46	24,5	12	17	RCU-219M-1/4N-10/8	637173	12,23 €
2,5	0-280	G 1/8	-	4	5	44	22	12	14	RCU-219M-1/8N-4P	637211	10,59 €
2,5	0-280	G 1/8	-	6	5	44	22,5	12	14	RCU-219M-1/8N-6P	637213	10,62 €
2,5	0-280	G 1/8	-	8	5	44	23	12	14	RCU-219M-1/8N-8P	637214	10,85 €
4,5	0-400	G 1/4	-	6	6,5	47	24,5	13	17	RCU-1/4N-6P	637223	12,37 €
4,5	0-400	G 1/4	-	8	6,5	47	25	13	17	RCU-219M-1/4N-8P	637224	12,64 €

Abbildung

 Abluft
drosselnd,
Rändelschraube
konterbar

 Option:
mit Messing-
Schwenk-
Ringstück