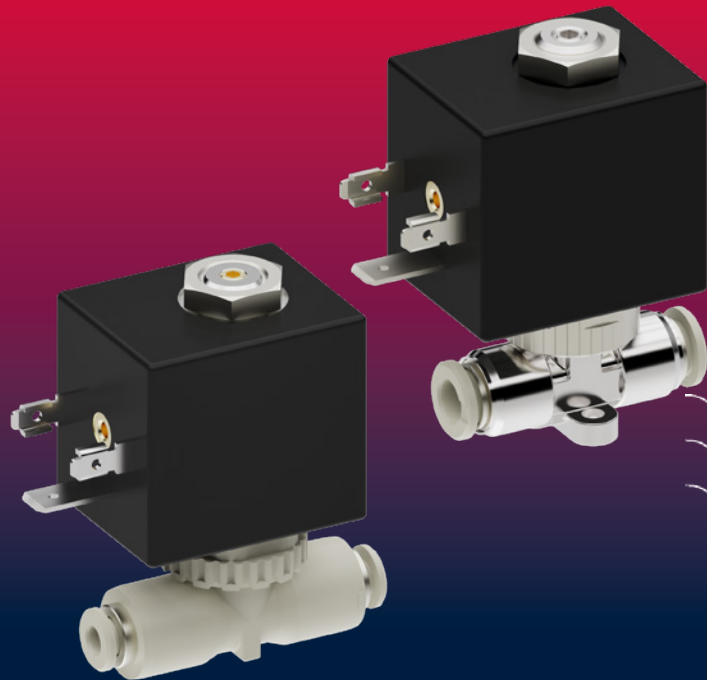


Precise flow control

Proportional flow control valve type FPV

With continuous flow control, the proportional valve type FPV is perfect for applications where high accuracy and fast response times are critical.



ADVANTAGES



Very good response

- Precise and short response times
- Good linearity and small hysteresis



Small space requirement

- Compact design
- Direct integration of AVS Römer push-in connectors



Proven push-in principle

- Simple system integration
- Cost savings due to fast and tool-free assembly



Standard variants

- Valve body made of PPSU or stainless steel (AISI 316L)
- Nominal sizes up to 2mm



Longer operating times

- Corrosion resistant materials
- Alignment rings with good anti-friction properties

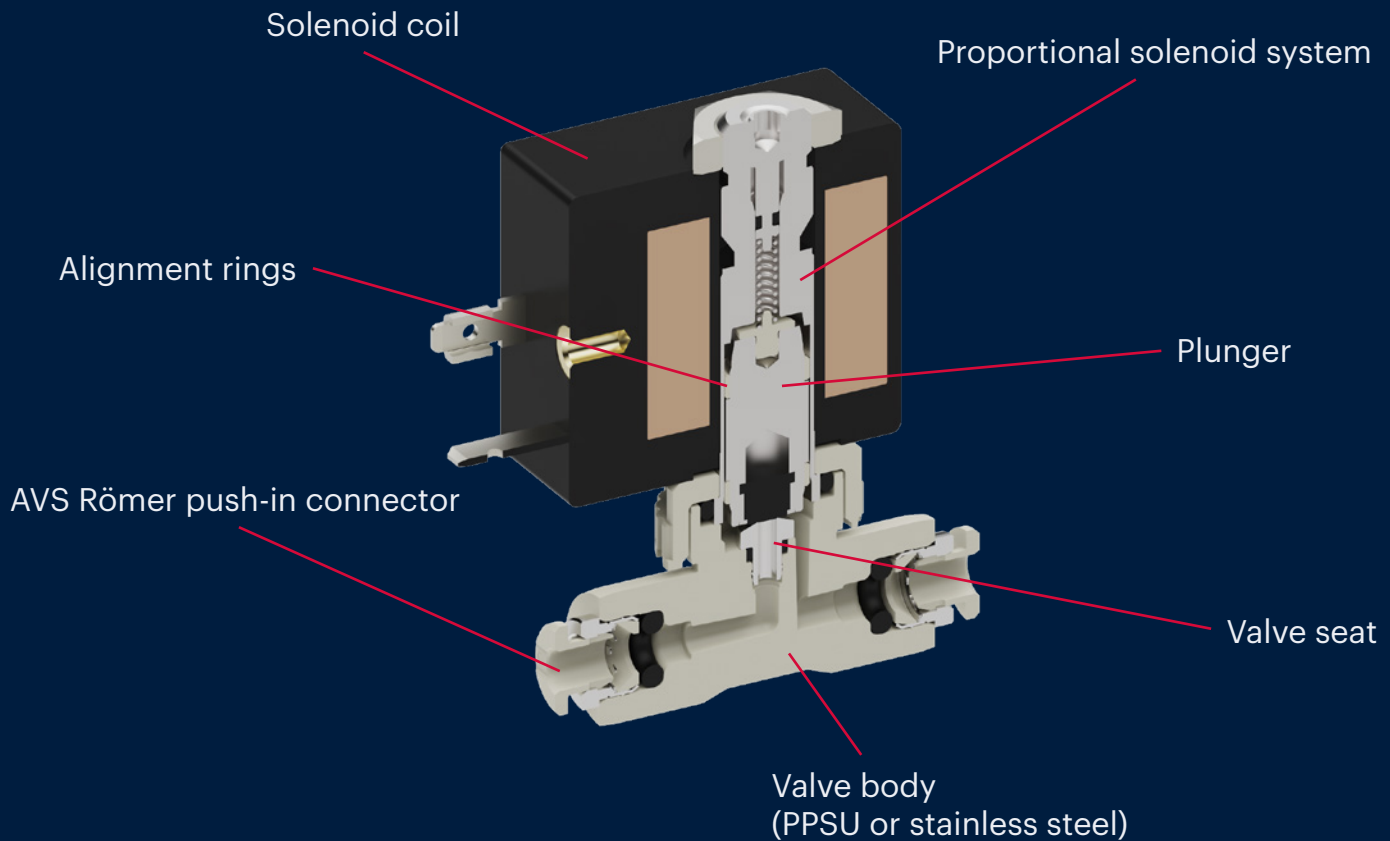


Tailored to your requirements

Customized solutions on request.



Precise flow control of liquids and gases

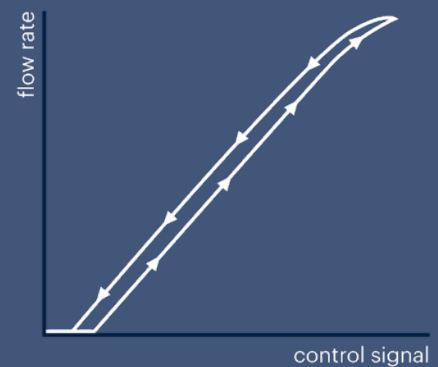


LOW HYSTERESIS

Minimal friction losses and avoidance of stick-slip effects were the key focus during development.

The result: Low hysteresis and good linearity.

- Stepless control and regulation
- Reproducible positioning
- Flow is directly proportional to the input signal



AVS Römer GmbH & Co. KG

Reismühle 3 • 94481 Grafenau • Phone: +49 8552 4076 300
info@avs-roemer.de • www.avs-roemer.de

V2023.08

